



EMPI



IDENTITY VALIDATION



EMPI ANALYTICS

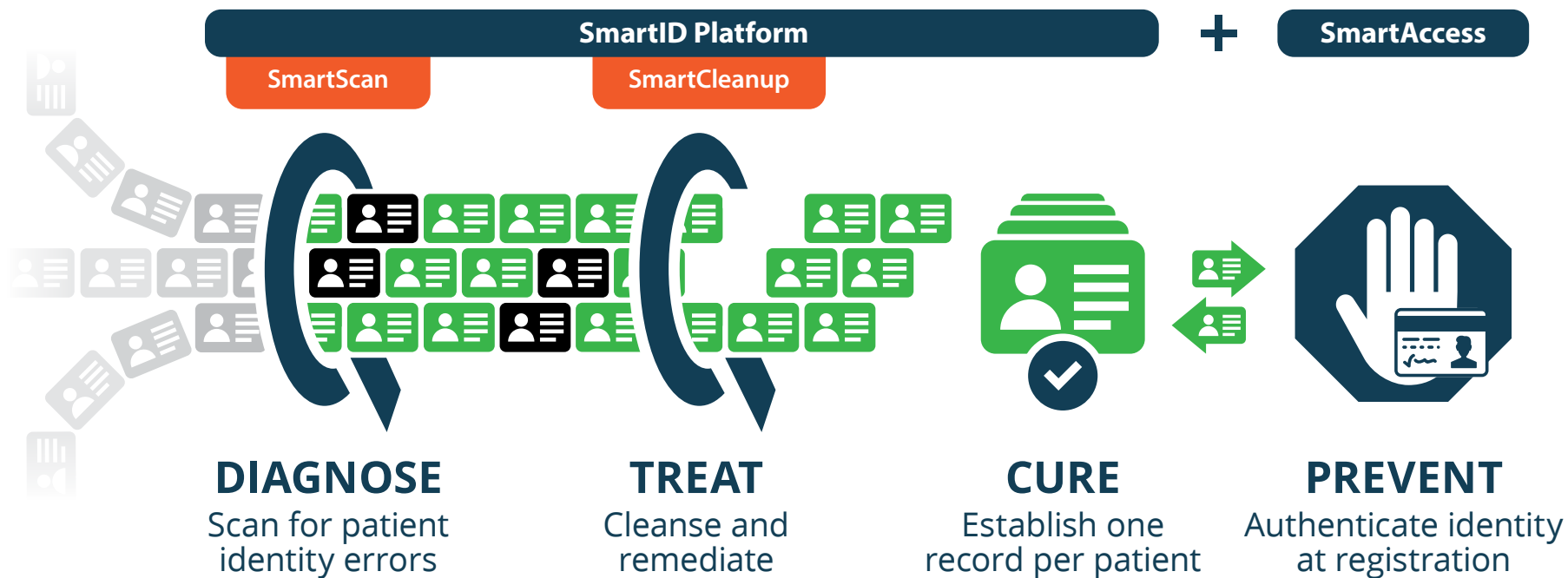


EMPI CLEANUP

# You Know Your Patients Are Unique. Does Your EMPI?

QuadraMed® is the only enterprise master person index (EMPI) vendor with end-to-end patient identity management systems and services.

From customized EMPI Cleanup services to ongoing data monitoring, error prevention, and identity authentication technology, we understand the patient data lifecycle and are your partner for accurate patient and provider data solutions.



## The Algorithm Makes All the Difference

- ✓ **Up to 99% Accuracy Rate**
- ✓ **Screens Against Many Patient Identifiers**  
Name, Gender, DOB, SSN, Address, Maiden Name, Phone, Race, Marital Status, etc.
- ✓ **Accounts for Human Error**  
Name Misspellings, Aliases, Digit Transposition, Typographical, Nickname
- ✓ **Built-in to QuadraMed's SmartID Platform**

### SOFTWARE

#### SmartID Platform™

Our SmartID Platform—including comprehensive patient identification and authentication systems—prevents record duplication and identity errors at the point of registration and point of care, helping to ensure providers have the most accurate and comprehensive medical records to guide their care decisions.

#### SmartAccess™

Combine a comprehensive EMPI with industry-leading identification validation technologies to streamline registration and scheduling processes with easy-to-understand on-screen prompts. Keep duplicates out from the start.

#### Provider Index

Patients aren't the only people your health system needs to track. Our enterprise master provider index consolidates disparate provider data into a single source to streamline processes in credentialing, scheduling, and revenue cycle management across the enterprise.

### SERVICES

#### SmartScan™ EMPI Analysis

Do you know your duplicate rate? It's probably higher than you think. The average hospital has a duplicate rate of 8–12%!<sup>1</sup> Clean patient data is the critical first step for any successful health IT integration, EHR conversion, interoperability initiative, or electronic information exchange.

Our SmartScan EMPI data analytics services scan and identify patient record duplicates and overlaps with more efficiency, quality, and accuracy than native EHR reports and other third-party EMPI applications.

#### SmartCleanup™

Operating with a high duplicate rate puts your patients, providers, and health system at risk. You can't afford to ignore patient identity errors.

We take extreme care of your patient information, load it directly into our analytics engine for maximum efficiency and safety, and perform the entire data analytics and cleansing operation in house from our secure, HIPAA-compliant operations center.

### Patient Validation Technology



DRIVER'S LICENSE CARD SWIPE

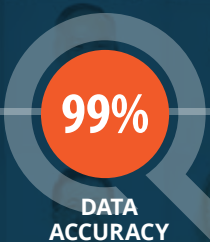


SMART CARD



BIOMETRIC AUTHENTICATION

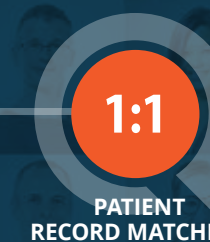
### EMPI Management



DATA ACCURACY



CENTRAL OPERATIONS CENTER



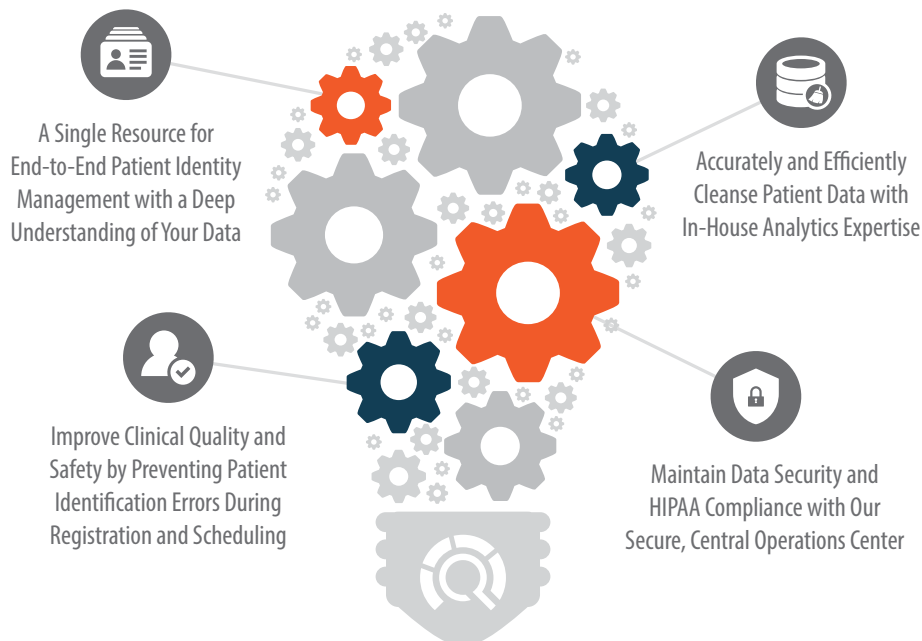
PATIENT RECORD MATCHING

<sup>1</sup> AHIMA, Why Patient Matching is a Challenge: Research on Master Patient Index (MPI) Data Discrepancies in Key Identifying Fields, 2016



# We Are EMPI Innovators

Award-Winning  
Software & Services



## Request Your Free Identity Consultation

See how many patient identification errors are hiding in your databases.

**QuadraMed.com**

A DIVISION OF HARRIS HEALTHCARE

*"We went from an 11.1% duplicate record rate to 0.2%. That has made a significant difference."*

**Maria Muscarella, RHIA**  
Assistant VP, HIM | Newark Beth Israel



**QuadraMed**  
HEALTHCARE IDENTITY EXPERTS

3460 Lotus Drive, Suite 100  
Plano, TX 75075

© QuadraMed Corporation